

CONVEYOR COMPONENTS

IDLERS – PULLEYS – SPEED REDUCERS

AGGREGATE EQUIPMENT SALES



© Copyright AES. All rights reserved

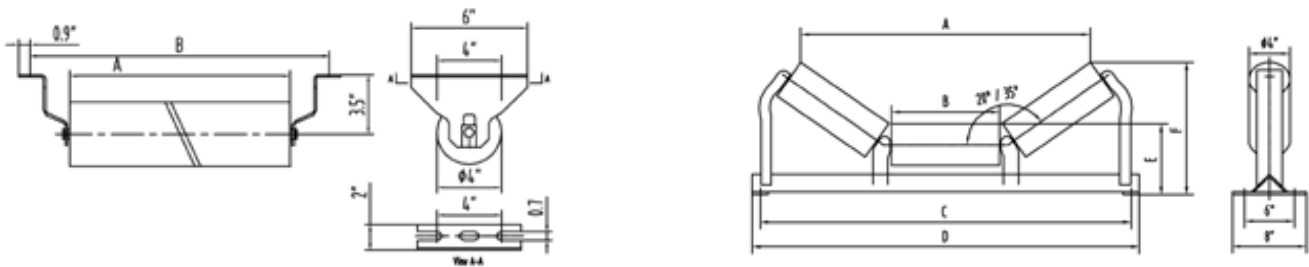
IDLERS

AES fabricates a comprehensive line of conveyor idlers for a wide variety of applications that comply with CEMA idler dimensional criteria and load ratings.

AES's idler product line is comprised of 4 inch CEMA "B", 5 inch CEMA "C", and 6 inch CEMA "D" Idlers, available in troughing, return, impact, training, channel mount, and picking styles for a wide range of belt widths. Our idlers are also interchangeable with a number of other manufacturer's products.

Our "Sealed for Life" bearings eliminate extra maintenance by keeping contaminants away from bearing cavity.

RETURN IDLERS 4"								
WIDTH		PART	WEIGHT		A		B	
in	mm		lb	kg	in	mm	in	mm
18	457	BR-18	15	7	21,0	533	27	686
24	610	BR-24	18	8	27,0	686	33	838
30	762	BR-30	23	10	33,0	838	39	991
36	914	BR-36	24	11	39,0	991	45	1143

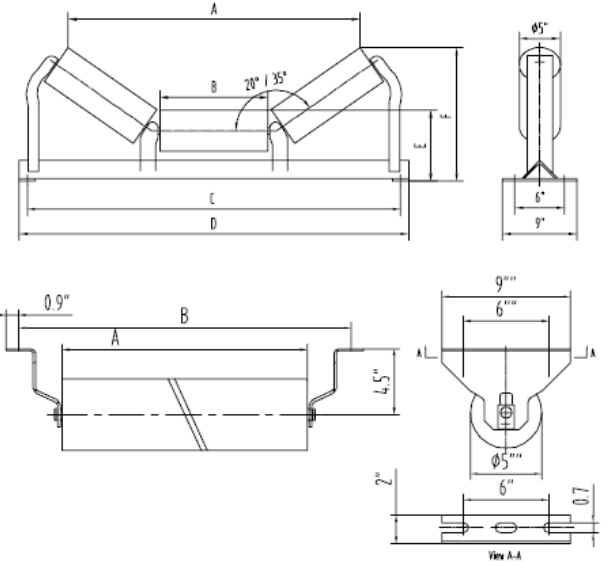


TROUGHING IDLERS 4"																
WIDTH		PART	WEIGHT		A		B		C		D		E		F	
in	mm		lb	kg	in	mm	in	mm	in	mm	in	mm	in	mm	in	mm
18	457	B20-18	29	13	21 1/3	541	7	178	27	686	29	737	7,13	181	9 5/8	244
24	610	B20-24	34	15	27 1/5	691	9	229	33	838	35	889	7,13	181	10 3/8	264
30	762	B20-30	37	17	33 1/5	843	11	279	39	991	41	1041	7,13	181	11	279
36	914	B20-36	44	20	39 1/9	992	13	330	45	1143	47	1194	7,13	181	11 3/4	298
18	457	B35-18	30	14	19 1/8	486	7	178	27	686	29	737	7,13	181	11 1/4	286
24	610	B35-24	35	16	24 1/2	622	9	229	33	838	35	889	7,13	181	12 1/2	318
30	762	B35-30	39	18	30 1/9	764	11	279	39	991	41	1041	7,13	181	13 5/8	346
36	914	B35-36	45	20	35 4/9	900	13	330	45	1143	47	1194	7,13	181	14 3/4	375



5" RETURN IDLERS

WIDTH		PART	WEIGHT		A		B	
in	mm		lb	kg	in	mm	in	mm
18	457	CR-18	20	9,1	22	559	27	686
24	610	CR-24	24	10,9	27	686	33	838
30	762	CR-30	28	12,7	33	838	39	991
36	914	CR-36	32	14,5	39	991	45	1143
42	1067	CR-42	36	16,3	45	1143	51	1295
48	1219	CR-48	40	18,1	51	1295	57	1448



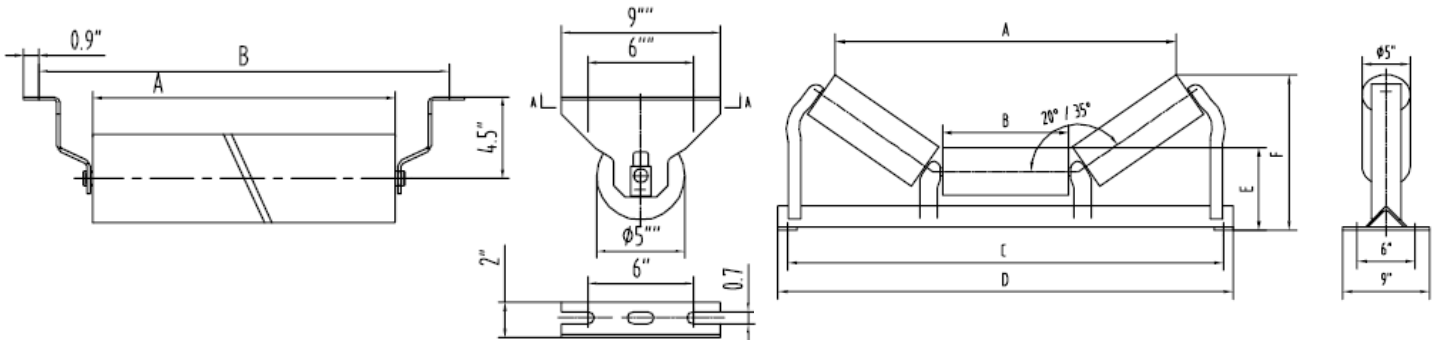
5" TROUGHING IDLERS

WIDTH		PART	WEIGHT		A		B		C		D		E		F	
in	mm		lb	kg	in	mm	in	mm	in	mm	in	mm	in	mm	in	mm
18	457	C20-18	42	19	19,13	486	7	178	27	686	29	737	8,3	210	12,4	314
24	610	C20-24	43	20	27,13	689	9	229	33	838	35	889	8,4	213	11,5	292
30	762	C20-30	52	24	32,13	816	11	279	39	991	41	1041	8,6	217	12,5	318
36	914	C20-36	57	26	38,13	968	13	330	45	1143	47	1194	8,6	217	13,1	333
42	1067	C20-42	64	29	45,38	1153	15	381	51	1295	53	1346	8,6	217	14,0	356
48	1219	C20-48	70	32	52,00	1321	17	432	57	1448	59	1499	8,6	217	14,9	378
54	1372	C20-54	77	35	55,75	1416	19	483	63	1600	65	1651	8,6	219	15,3	387
60	1524	C20-60	81	37	63,63	1616	22	559	69	1753	71	1803	8,6	219	16,1	410
18	457	C35-18	39	18	21,3	540	7	178	27	686	29	737	8,3	210	10,8	273
24	610	C35-24	46	21	24,5	622	9	229	33	838	35	889	8,4	213	13,5	343
30	762	C35-30	53	24	29,9	759	11	279	39	991	41	1041	8,6	217	15,0	381
36	914	C35-36	58	26	35,1	892	13	330	45	1143	47	1194	8,6	217	16,1	410
42	1067	C35-42	68	31	41,4	1051	15	381	51	1295	53	1346	8,6	217	17,5	445
48	1219	C35-48	75	34	52,0	1321	17	432	57	1448	59	1499	8,6	217	18,8	476
54	1372	C35-54	81	37	59,9	1521	19	483	63	1600	65	1651	8,6	219	19,5	495
60	1524	C35-60	86	39	58,0	1473	22	559	69	1753	71	1803	8,6	219	21,1	537



6" RETURN IDLERS

WIDTH		PART	WEIGHT		A		B	
in	mm		lb	kg	in	mm	in	mm
36	914	BR-36	49,5	22	38,9	987	45	114
42	1067	BR-42	55,7	25	44,9	1140	51	130
48	1219	BR-48	61,8	28	50,9	1292	57	145
60	1524	BR-60	74,3	34	62,9	1599	69	175



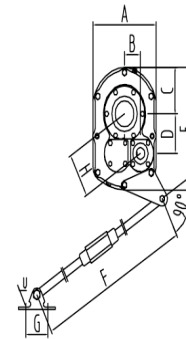
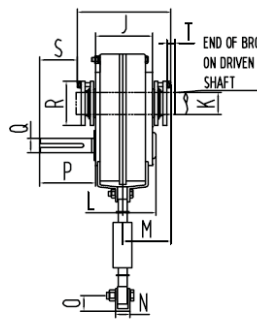
6" - TROUGHING IDLERS

WIDTH		PART	WEIGHT		A		B		C		D		E		F	
in	mm		lb	kg	in	mm	in	mm	in	mm	in	mm	in	mm	in	mm
36	914	DL20-36	120,8	55	38,6	979	13,1	332	45	1143	47,0	1194	9,3	237	13,9	352
42	1067	DL20-42	143,7	65	45,6	1159	15,3	387	51	1295	53,6	1360	9,6	243	15,1	383
48	1219	DL20-48	161,3	73	51,2	1300	17,4	441	57	1448	59,6	1513	9,6	243	1,8	44
60	1524	DL20-60	202,6	92	63,5	1613	21,8	552	69	1753	71,6	1818	10,0	254	17,5	445
36	914	D35-36	88,4	40	35,1	891	13,1	332	45	1143	47,0	1194	9,3	237	16,8	427
42	1067	D35-42	99,9	45	41,3	1048	15,4	391	51	1295	53,6	1360	9,6	243	18,5	470
48	1219	D35-48	112,9	51	49,4	1256	17,4	441	57	1448	59,6	1513	9,6	243	19,6	498
60	1524	D35-60	144,3	65	58,0	1473	21,7	552	69	1753	71,6	1818	10,0	254	22,4	570

- Rugged self-cleaning welded steel frame
- Broached shaft to add frame stability
- Stamped center and end brackets recessed end disk eliminating roll-to-end disc separation
- Precision ground lifetime greased ball bearings with positive lip contact seals
- Heavy-duty center and end stands
- Precision deep drawn bearing housing
- Return idlers with drop or riser brackets

SPEED REDUCERS

- Ductile iron cast housings are precision machined and corrosion resistant.
- Ribbed housing construction give strong, rigid support for bearings and gearing.
Double lip seals retain oil while locking out dirt for superior lubrication and extended operating life
- To eliminate the need for coupling or chain drive, sliding motor base and support structure and avoiding all alignment problems, the reducer mounts directly on driven shaft.
- Torque arm reducers can be placed anywhere along the driven shaft in horizontal, vertical and inclined positions.
- Helical gear tooth design increases the power transfer ratio.
- Twin taper bushings reduces movement between the reducer and the shaft.



	2,00		3,00		4,00		5,00		6,00		7,00		8,00		9,00		
	in	mm	in	mm	in	mm	in	mm	in	mm	in	mm	in	mm	in	mm	
A	8,38	212,85	9,25	234,95	10,38	263,65	13,13	333,50	13,13	333,50	18,75	476,25	20,25	514,35	22,63	574,80	
B	2,14	54,36	2,33	59,18	3,76	95,50	4,09	103,89	4,90	124,46	5,11	129,79	6,03	153,16	6,59	167,39	
C	4,09	103,89	4,84	122,94	5,50	139,70	7,56	192,02	7,56	192,02	9,38	238,25	10,03	254,76	11,31	287,27	
D	3,75	95,25	4,17	105,92	4,79	121,67	6,73	170,94	6,73	170,94	8,30	210,82	9,50	241,30	10,81	274,57	
E	1,41	35,81	12,88	327,15	15,13	384,30	21,31	541,27	21,31	541,27	25,94	658,88	28,25	717,55	31,69	804,93	
F	min	26,94	684,27	26,94	684,27	29,19	741,42	29,19	741,42	29,44	747,77	29,44	747,77	30,00	762,00	30,00	762,00
	max	32,94	836,67	32,94	836,67	35,19	893,82	35,19	893,82	35,44	900,17	35,44	900,17	36,00	914,40	36,00	914,40
G	3,00	76,20	3,00	76,20	4,00	101,60	4,75	120,65	4,75	120,65	4,75	120,65	7,00	177,80	7,00	177,80	
H	4,32	109,73	4,78	121,41	5,53	140,46	7,88	200,15	7,88	200,15	9,74	247,40	10,25	260,35	12,66	321,56	
I	7,32	185,93	9,22	234,19	9,98	253,49	11,53	292,86	11,53	292,86	12,85	326,39	14,03	356,36	14,12	358,65	
J	4,50	114,30	5,63	143,00	6,13	155,70	6,88	174,75	6,88	174,75	7,75	196,85	8,37	212,60	8,12	206,25	
K	1,94	49,21	2,19	55,56	2,44	61,91	3,44	87,31	3,44	87,31	3,94	100,01	4,44	112,71	4,94	125,41	
L	2,82	71,63	3,33	84,58	3,14	79,76	4,57	116,08	4,57	116,08	4,69	119,13	5,85	148,59	5,66	143,76	
M	3,68	93,47	4,52	114,81	4,79	121,67	5,73	145,54	5,73	145,54	6,38	162,05	7,04	178,82	7,04	178,82	
N	1,25	31,75	1,25	31,75	1,44	36,58	2,75	69,85	3,75	95,25	2,75	69,85	4,00	101,60	4,00	101,60	
O	1,06	26,92	1,06	26,92	1,75	44,45	2,00	50,80	2,00	50,80	2,00	50,80	3,13	79,50	3,13	79,50	
P	3,59	91,19	4,34	110,24	5,57	141,48	6,08	154,43	6,08	154,43	6,35	161,29	7,11	180,59	9,65	245,11	
R	4,06	103,12	4,38	111,25	4,81	122,17	6,13	155,70	6,13	155,70	7,26	184,40	7,75	196,85	8,75	222,25	
S	2,22	56,39	2,34	59,44	3,44	87,38	3,73	94,74	3,73	94,74	4,31	109,47	4,31	109,47	6,63	168,40	
T min	1,25	31,75	1,50	38,10	4,75	120,65	1,81	45,97	1,81	45,97	2,06	52,32	2,06	52,32	2,44	61,98	
U	0,44	11,18	0,44	11,18	0,50	12,70	0,63	16,00	0,63	16,00	0,75	19,05	0,75	19,05	0,75	19,05	



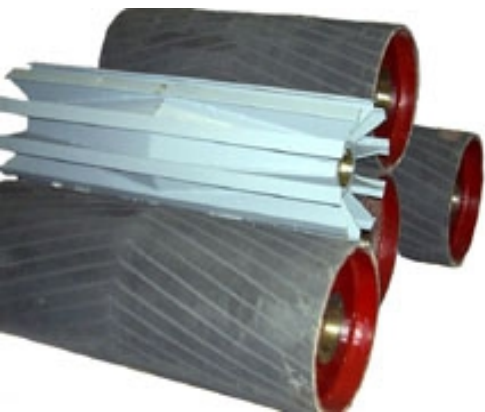
PULLEYS

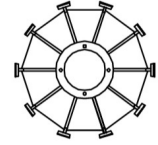
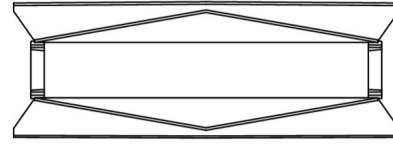
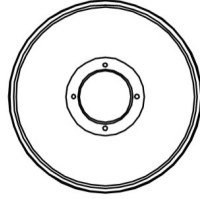
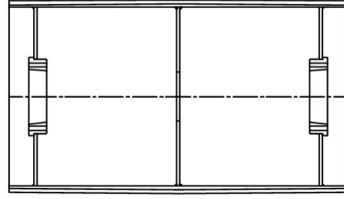
AES manufactures a wide range of sizes of both drum pulleys and wing pulleys. These heavy-duty pulleys use engineered industrial-strength end discs, flat bar wing design, standard XT style bushings and XT hubs for simple installation, machined crowns and vulcanized lagging and high strength end discs.

CROWNED LAGGED DRUM PULLEY

DIA.		FACE WIDTH		HUB		WEIGHT	
in	mm	in	mm	in	mm	lbs	kg
8	203	20	508	25	635	60	27
		26	660	25	635	70	32
		32	813	25	635	85	39
		38	965	25	635	100	45
10	254	20	508	25	635	75	34
		26	660	25	635	90	41
		32	813	25	635	110	50
		38	965	25	635	135	61
		44	1118	30	762	150	68
12	305	20	508	25	635	95	43
		26	660	25	635	125	57
		26	660	30	762	130	59
		32	813	25	635	140	64
		32	813	30	762	145	66
		38	965	30	762	170	77
		38	965	30	762	175	79
		44	1118	30	762	220	100
14	356	26	660	25	635	155	70
		26	660	30	762	160	73
		32	813	25	635	175	79
		32	813	30	762	180	82
		38	965	25	635	205	93
		38	965	30	762	210	95
		44	1118	30	762	240	109

DIA.		FACE WIDTH		HUB		WEIGHT			
in	mm	in	mm	in	mm	lbs	kg		
16	406	26	660	25	635	175	79		
		26	660	30	762	180	82		
		26	660	35	889	185	84		
		32	813	25	635	230	104		
		32	813	30	762	235	107		
		32	813	35	889	240	109		
		38	965	30	762	250	113		
		38	965	35	889	255	116		
		44	1118	30	762	270	122		
		44	1118	35	889	257	117		
		51	1295	35	889	320	145		
		63	1600	40	1016	360	163		
18	457	26	660	30	762	235	107		
		26	660	35	889	240	109		
		32	813	35	889	250	113		
		32	813	40	1016	255	116		
		38	965	35	889	290	132		
		38	965	40	1016	300	136		
		44	1118	35	889	340	154		
		44	1118	40	1016	350	159		
		51	1295	40	1016	415	188		
		20	508	26	660	35	889	270	122
				32	813	40	1016	290	132
				32	813	50	1270	345	156
38	965			35	889	325	147		
38	965			40	1016	478	217		
38	965			50	1270	498	226		
44	1118			50	1270	541	245		
51	1295			50	1270	551	250		
24	610			26	660	40	1016	440	200
				32	813	40	1016	520	236
				32	813	50	1270	530	240
				38	965	45	1143	645	293
		38	965	50	1270	655	297		
		44	1118	50	1270	750	340		
		51	1295	50	1270	900	408		





CROWNED SMOOTH STEEL PULLEY

DIA.		FACE WIDTH		HUB		WEIGHT	
in	mm	in	mm	in	mm	lbs	kg
10	254	20	508	25	635	66	30
		26	660	25	635	77	35
		32	813	25	635	87	39
		38	965	25	635	98	44
12	305	26	660	25	635	110	50
		26	660	30	762	111	50
		32	813	25	635	123	56
		32	813	30	762	128	58
14	356	38	965	30	762	139	63
		26	660	25	635	139	63
		32	813	30	762	168	76
16	406	38	965	30	762	177	80
		44	1118	30	762	183	83
		32	813	30	762	267	121
18	457	38	965	35	889	304	138
		32	813	35	889	248	112
		38	965	35	889	261	118

CROWNED WING TAIL PULLEY

DIA.		FACE WIDTH		HUB		WEIGHT			
in	mm	in	mm	in	mm	lbs	kg		
8	203	20	508	25	635	66	30		
		26	660	25	635	86	39		
		32	813	25	635	106	48		
		38	965	25	635	127	58		
10	254	20	508	25	635	80	36		
		26	660	25	635	101	46		
		32	813	25	635	129	59		
		38	965	25	635	153	69		
		44	1118	30	762	218	99		
		51	1295	30	762	235	107		
12	305	20	508	25	635	122	55		
		32	813	25	635	153	69		
		32	813	30	762	181	82		
		38	965	25	635	179	81		
		38	965	30	762	214	97		
		44	1118	30	762	204	93		
		51	1295	30	762	288	131		
		63	1600	30	762	347	157		
		14	356	26	660	30	762	170	77
				32	813	25	635	196	89
32	813			30	762	199	90		
38	965			25	635	234	106		
38	965			30	762	243	110		
44	1118			30	762	271	123		
51	1295			35	889	330	150		
63	1600			35	889	414	188		
16	406			26	660	25	635	198	90
				26	660	30	762	185	84
				32	813	25	635	220	100
				32	813	30	762	228	103
		38	965	30	762	260	118		
		38	965	35	889	266	121		
		44	1118	35	889	317	144		
		51	1295	35	889	361	164		
		63	1600	40	1016	414	188		
		18	457	26	660	30	762	222	101
				32	813	35	889	280	127
				38	965	35	889	310	141
44	1118			35	889	356	161		
44	1118			40	1016	362	164		
51	1295			40	1016	440	200		
20	508			26	660	35	889	253	115
				32	813	35	889	310	141
				38	965	40	1016	364	165
				44	1118	40	1016	428	194
				51	1295	40	1016	497	225



ABOUT AES

Aggregate Equipment Sales is your specialist for aggregate washing equipment and conveyor components. We service the aggregate processing industry with high-quality, cost-effective wear parts and conveyor components.



AGGREGATE EQUIPMENT SALES

4530 Andrews Street, Unit L,
North Las Vegas, NV
89081, USA

Tel: 702-643-6888

Fax: 702-643-6898

Toll Free: 1-866-755-5650

<http://aggequipment.com>



© Copyright AES. All rights reserved